

STRATOS



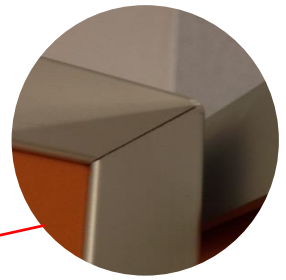
30mm x 25mm x 3mm silver anodised aluminium channel headrail



30mm x 25mm x 3mm silver anodised aluminium wall channel



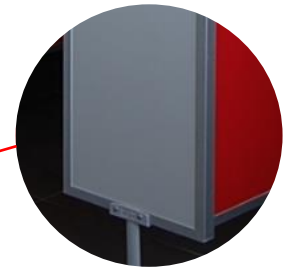
YMCA Pitt Street, Auckland



Silver anodised aluminium edge trim corner detail



Cast alloy, powder coated pedestal



Silver anodised aluminium edge trim to perimeter of all panels

Board: 16mm MDF with High Pressure Laminate

Colour: Doors – Pillarbox Red; Fascia's and Dividers – Oyster Grey
Hardware: Satin Chrome Finish

Boards:

- 18mm Marine-Ply with high pressure laminate
- 16mm MDF with high pressure laminate
- 18mm MDF with low pressure laminate

Stratos partition system overview:

- Cast alloy, powder-coated pedestal mounted, overhead braced
- Aluminium edge trim to all edging for protection
- Stainless Steel 75 x 50 hold open butt hinges
- Standard 150mm pedestals, also available in 80mm-230mm height

Extrusions and Components:

- Anodised load supporting custom skirt mount pedestal
- 30mm x 25mm x 3mm silver anodised aluminium channel forming headrail and wall brackets

Edge Treatment:

- Silver anodised aluminium edge trim to perimeter of all panels

Warranties:

- Board
 - ≈ 18mm Marine-Ply – 2 years
 - ≈ 18mm MDF – 2 years
 - ≈ 16mm MDF – 2 years
- Hardware – 2 years
- Installation – 2 years

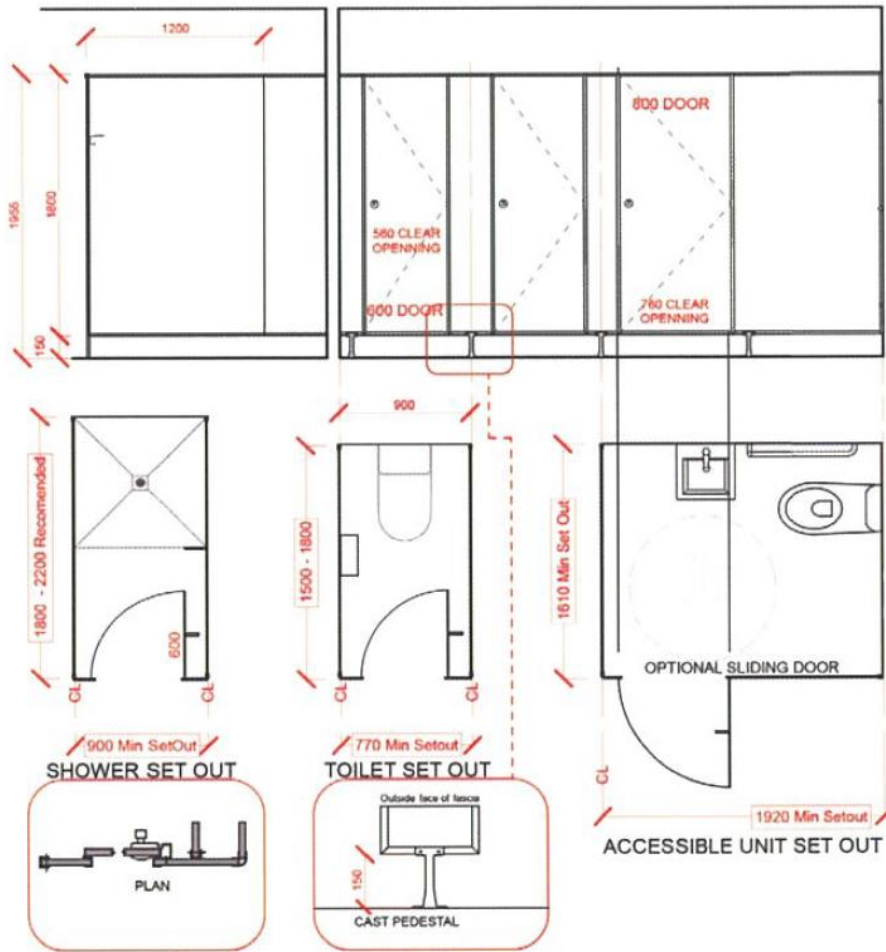
Features:	18mm Marine-Ply	18mm MDF	16mm MDF
Group 3 Fire Rating			✓
Stainless steel fixings	✓	✓	✓
Impact resistant	✓		✓
Moisture resistant	✓		✓
Powder coating to aluminium trim available optional extra	✓	✓	✓
CF2 Stainless Steel bullet style foot available optional extra	✓	✓	✓
Sliding door or open out door to comply with accessibility requirement available	✓	✓	✓
Octagonal headrail channel, providing extra strength available optional extra	✓	✓	✓
Full length channel at all junctions in lieu of wall brackets available	✓	✓	✓
Environmentally friendly, low emissions	✓	✓	✓

Uses :			
Wet areas	✓		
Dry areas	✓	✓	✓

Full specification and additional technical data available on www.haleman.co.nz



TYPICAL DETAILS



DESIGN PATENTED HARDWARE



Concealed fix Wave lock with bumper



Satin chrome Indicator face with red/green indication



Satin chrome Indicator face with red/green indication



Stainless Steel 75mm x 75mm hold Open butt hinge



Standard Cast alloy powder-coated pedestal



Optional CF2 Stainless Steel bullet style foot



Concealed fix Wave coat hook



HALE MANUFACTURING LTD
PARTITION AND WASHROOM SYSTEMS