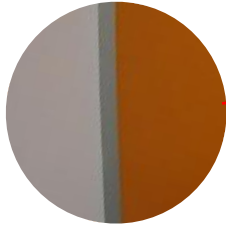


NIMBUS



Silver anodised aluminium wall channel



Silver anodised aluminium channel headrail



Standard Cast alloy powder-coated pedestal

Hobsonville Point School, Auckland

Board: 13mm Compact Laminate

Colour: Mandarin

Hardware: Satin Chrome Finish

Boards:

- 13mm Compact Laminate
- 13mm SwissCDF
- 18mm Melteca
- 18mm Structural MR board
- 18mm MDF with high pressure laminate

Nimbus partition system overview:

- Standard height 150mm cast alloy, powder-coated pedestal mounted
- Overlay and/or flush doors
- Stainless steel 75 x 50mm hold open butt hinges or Concealed fixed Wave gravity hinges
- Silver anodised aluminium channel forming headrail and full length wall channels
- Pedestals available in 80mm-230mm height

Edge Treatment:

- Compact Laminate
≈ None (oil will enhance black edge)
- SwissCDF
≈ None (oil will enhance black edge)
- Melteca
≈ PVC Edges
- Structural MR board
≈ 2mm ABS edging, matching colour of panel face
- MDF core with high pressure laminate sheathing and edges

Warranties:

- Board
 - ≈ 13mm Compact Laminate – 10 years
 - ≈ 13mm SwissCDF – 5 years
 - ≈ Melteca – 2 years
 - ≈ 18mm Structural MR board – 7 years
 - ≈ 18mm MDF – 2 years
- Hardware – 2 years
- Installation – 2 years

| Features: | 13mm Compact Laminate | 13mm SwissCDF | 18mm Melteca | 18mm Structural MR board | 18mm MDF HPL |
|--|-----------------------|---------------|--------------|--------------------------|--------------|
| Group 3 Fire Rating | ✓ | ✓ | ✓ | ✓ | ✓ |
| Stainless steel fixings | ✓ | ✓ | ✓ | ✓ | ✓ |
| Impact resistant | ✓ | ✓ | ✓ | ✓ | ✓ |
| Moisture resistant | ✓ | ✓ | ✗ | ✗ | ✗ |
| Powder coating to aluminium trim available optional extra | ✓ | ✓ | ✓ | ✓ | ✓ |
| CF2 Stainless Steel bullet style foot available optional extra | ✓ | ✓ | ✓ | ✓ | ✓ |
| Sliding door or open out door to comply with accessibility requirement available | ✓ | ✓ | ✓ | ✓ | ✓ |
| Octagonal headrail channel, providing extra strength available optional extra | ✓ | ✓ | ✓ | ✓ | ✓ |
| Full length channel at all junctions in lieu of wall brackets available | ✓ | ✓ | ✓ | ✓ | ✓ |
| Environmentally friendly, low emissions | ✓ | ✓ | ✓ | ✓ | ✓ |

| Uses : | 13mm Compact Laminate | 13mm SwissCDF | 18mm Melteca | 18mm Structural MR board | 18mm MDF HPL |
|-----------|-----------------------|---------------|--------------|--------------------------|--------------|
| Wet areas | ✓ | ✗ | ✗ | ✗ | ✗ |
| Dry areas | ✓ | ✓ | ✓ | ✓ | ✓ |

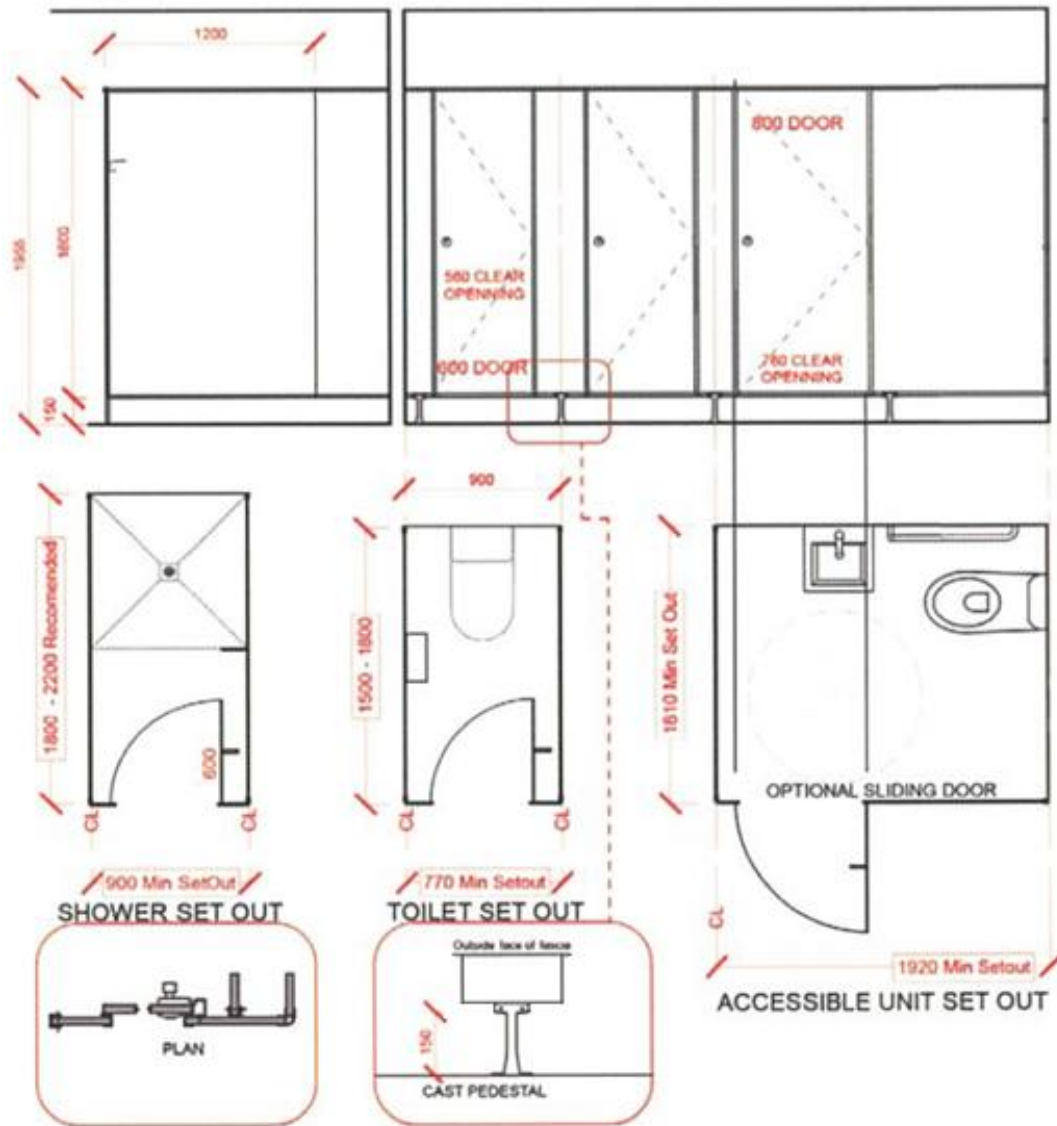
Updated February 2016

Full specification and additional technical data available on www.haleman.co.nz



HALE MANUFACTURING LTD
PARTITION AND WASHROOM SYSTEMS

TYPICAL DETAILS



DESIGN PATENTED HARDWARE



Concealed Square Moda Lock with Indicator and Door Stop



Standard Cast alloy powder-coated pedestal



Concealed fix 106C emergency lift off gravity hinge



Concealed fix coat hook

